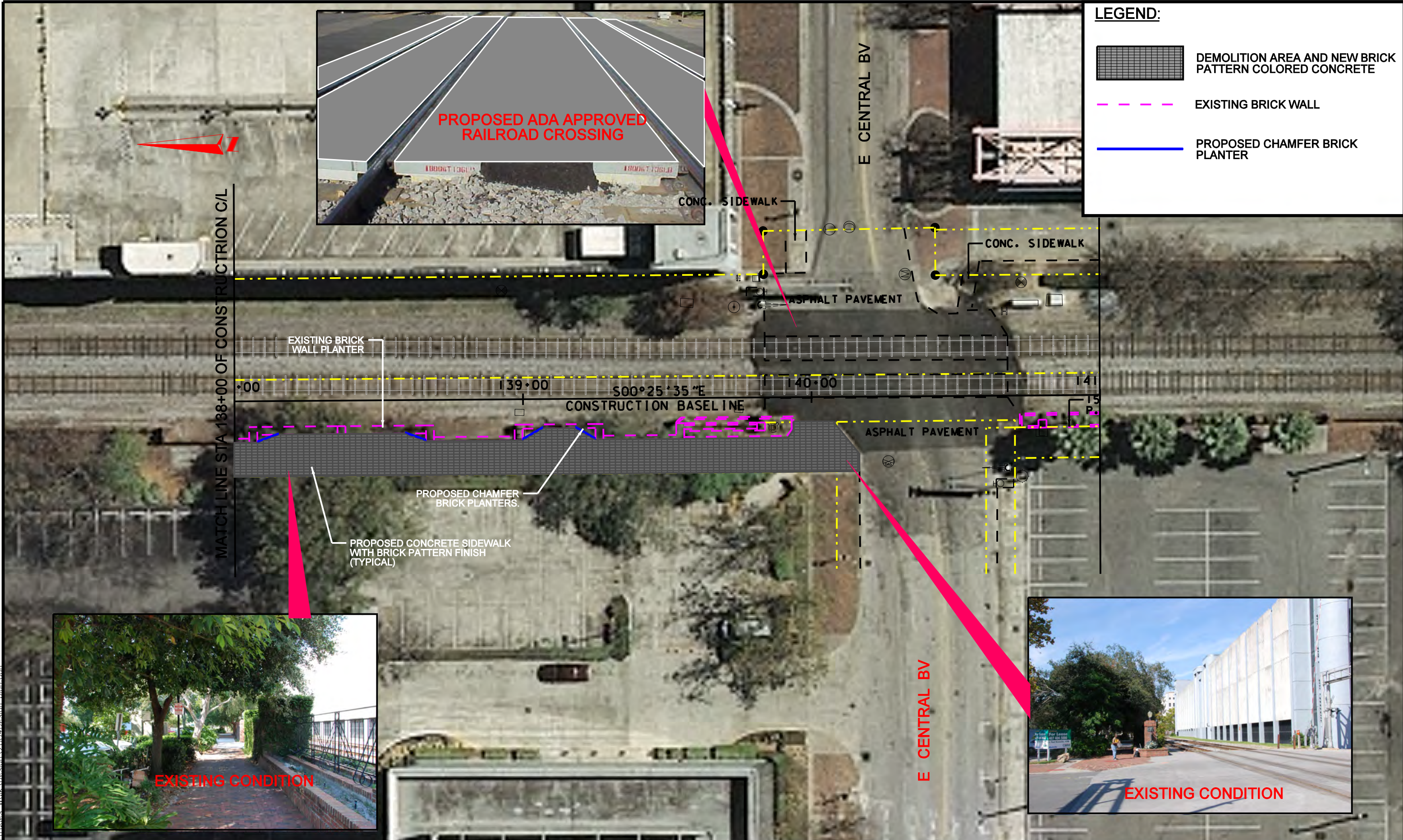
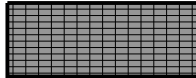




PRINT DATE & TIME: 2/8/2010 3:23:07 PM
 E:\Dgn\2884\28842\Gertudes Walk\Design\2884\Design-plan.dwg
 (MJ2009)



LEGEND:

-  DEMOLITION AREA AND NEW BRICK PATTERN COLORED CONCRETE
-  EXISTING BRICK WALL
-  PROPOSED CHAMFER BRICK PLANTER



DATE:	BY:	DESCRIPTION	REVISION

SIGN OFF	DATE	SURVEYED BY:

ENGINEER'S CERTIFICATION
 I hereby certify that the attached plans and design are in general compliance with the design standards and criteria in effect on this date for the City Of Orlando Public Works Department.

CHARLES C. CONKLIN, P.E.
 Engineering Design Manager
 Professional Engineer No. 43246

Date: _____
 Tel No. (407) 246-3182



CITY OF ORLANDO
 DEPARTMENT OF PUBLIC WORKS
 CAPITAL IMPROVEMENT AND INFRASTRUCTURE DIVISION
 400 SOUTH ORANGE AVENUE, 8th FLOOR, ORLANDO, FLORIDA 32801

JOB NO.	28842	GERTUDE'S SIDEWALK RENOVATIONS PROPOSED PLAN
FILE NAME:	2884\at-05.dwg	
ARCHIVE DISC:		
SCALE: HORZ.: 1:30		
VERT.:		SHEET 3 OF 5



LEGEND:

- DEMOLITION AREA AND NEW BRICK PATTERN COLORED CONCRETE
- EXISTING BRICK WALL
- PROPOSED CHAMFER BRICK PLANTER



PRINT DATE & TIME: 2/8/2010 3:14:30 PM
 E:\D\28842\Gertrudes Walk\Design\28842Design_plan.dwg
 (MJ2009)

DATE:		BY:	DESCRIPTION	REVISION	SIGN OFF	DATE	SURVEYED BY:	ENGINEER'S CERTIFICATION	<p>CITY OF ORLANDO DEPARTMENT OF PUBLIC WORKS CAPITAL IMPROVEMENT AND INFRASTRUCTURE DIVISION 400 SOUTH ORANGE AVENUE, 8th FLOOR, ORLANDO, FLORIDA 32801</p>	JOB NO. 28842 FILE NAME: 28842-t-06.dwg ARCHIVE DISC: SCALE: HORZ.: 1:30 VERT.:	GERTUDE'S SIDEWALK RENOVATIONS PROPOSED PLAN SHEET 4 OF 5
DATE:		BY:	DESCRIPTION	REVISION	SIGN OFF	DATE	SURVEYED BY:	I hereby certify that the attached plans and design are in general compliance with the design standards and criteria in effect on this date for the City Of Orlando Public Works Department. CHARLES C. CONKLIN, P.E. Engineering Design Manager Professional Engineer No. 43246 Date: _____ Tel No. (407) 246-3182			

